

How to Optimize SQL Account speed performance?

Introduction

Firebird default setting is not fully utilizes the RAM, by using this new function, user can self allocate size of RAM to be use for each database.

Pros

- Fully use available Ram in server
- Increase the database performance

Cons

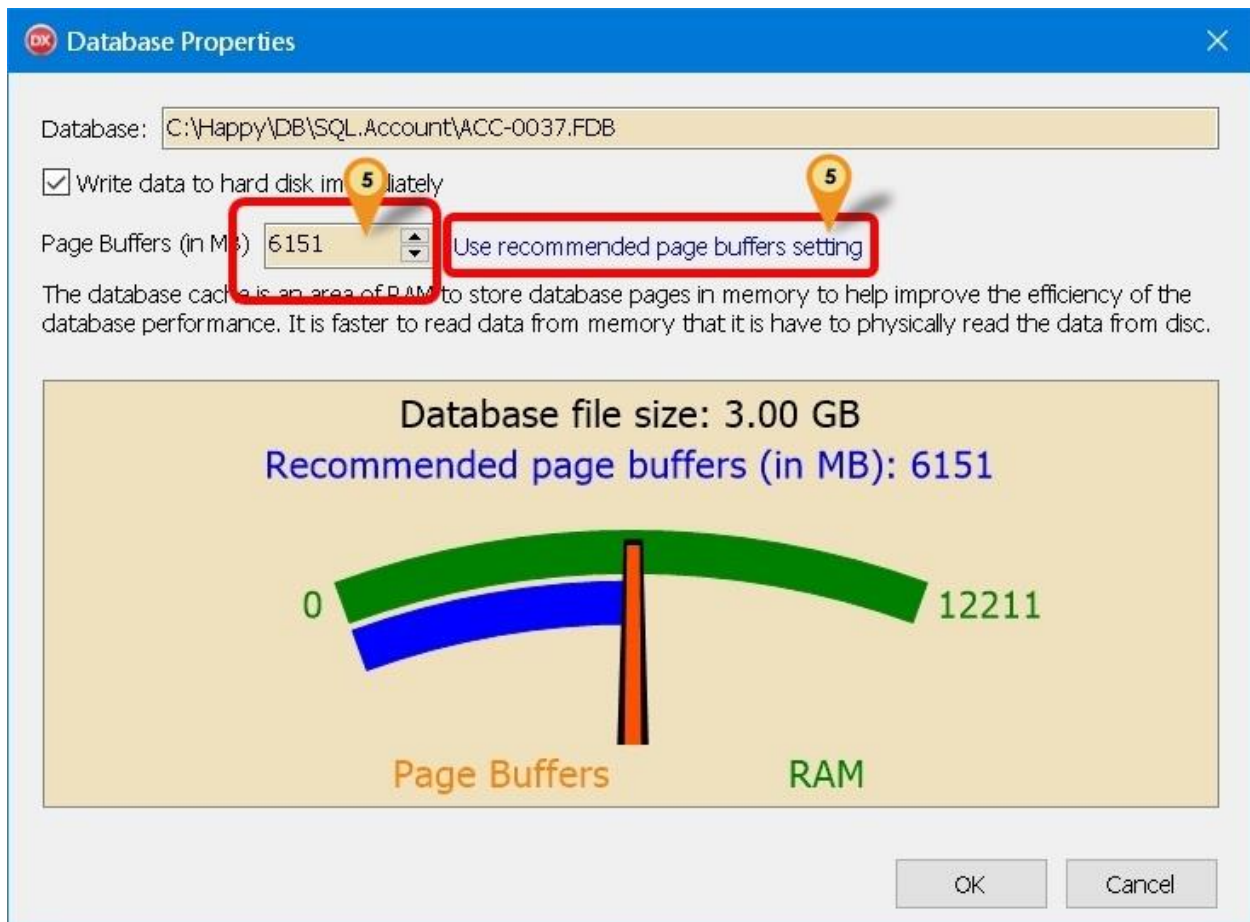
- Server performance slow down once exceed max ram
- Not support on standalone

Requirement

- SQL Account version 746 or above
- SQL Payroll version 130 or above
- Firebird server
- Minimum 16gb of Ram

Step :

- 1) Click on the 3 dot button
- 2) Right click on the database you wanted to set.
- 3) Select **properties**
- 4) Enter **ADMIN** password



Function	Description
Write Data to hard disc immediately	<ul style="list-style-type: none"> • Tick on Default – this mean that data is flushed to disc on COMMIT. This is safest for your data. • Untick – The operating system controls when the data is actually written to disc.
Page Buffer (in MB)	16 (Default)

- 5) Enter the size you wanted or click on *use recommended page buffers setting*
- 6) Click on OK